

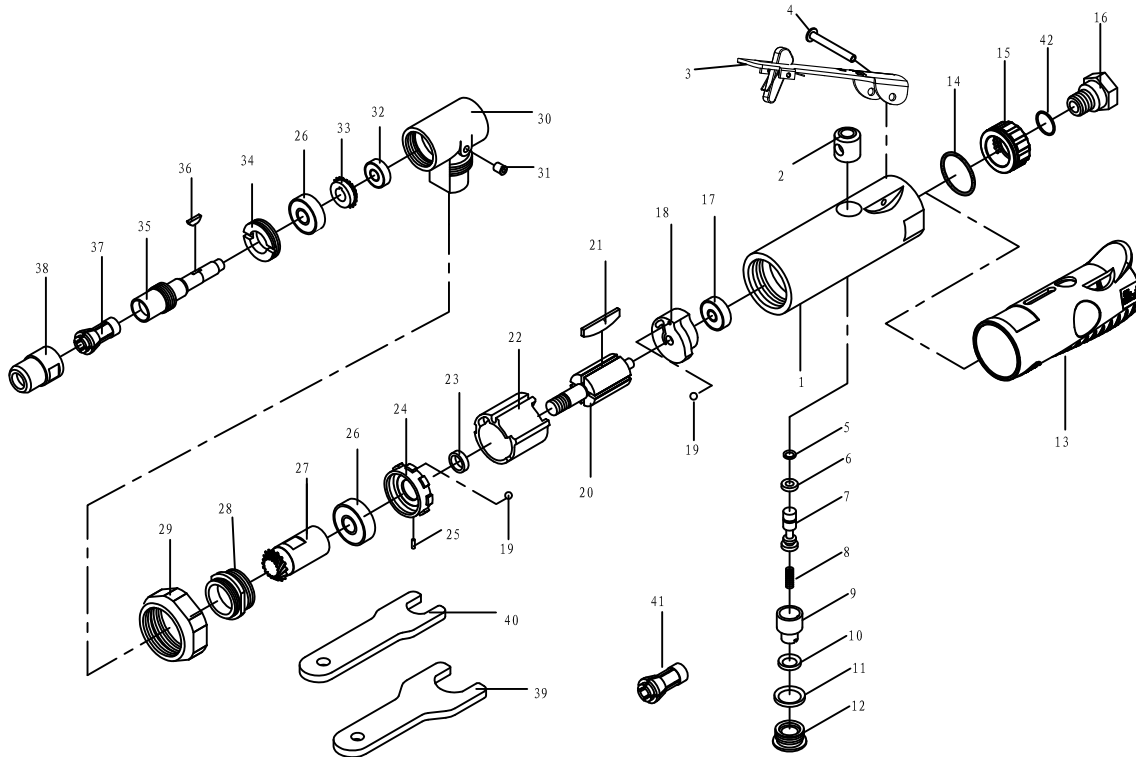
AIR ANGLE DIE GRINDER

Specifications

Collet Size..... 1/8", 1/4", 3mm, 6mm
 Free Speed..... 20, 000RPM
 Average Air Consumption..... 4SCFM@90PSI

Air Inlet..... 1/4"
 Weight..... 0.50kg
 Exhaust..... Rear 360° Exhaust

Parts List



Ref.	Part#	Description	Q'TY
------	-------	-------------	------

Ref.	Part#	Description	Q'TY
------	-------	-------------	------

1	WFG-2210-01	Housing	1
2	WFG-1210-02	Valve Bushing	1
3	WFG-2210-02	Trigger Component	1
4	GB/T873-86 3*24	Screw	1
5	O Ring 3.3*1.5	O-Ring	1
6	JB/T6659-1993 4*2	O-Ring	1
7	WFG-2210-03	Pin	1
8	WFG-1210-05	Spring	1
9	WFG-1210-06	Adjusting Knob	1
10	O Ring 7*2	O-Ring	1
11	O Ring 11.2*2.4	O-Ring	1
12	WFG-1210-07	Nut	1
13	WFG-2015-03	Jacket	1
14	JB/T 6659-1993 25*2	O-Ring	1
15	WFR-2061-03	Muffle Cover	1
16	WFR-2061-04	Air Inlet Connector	1
17	GB/T276-1994 696-2Z	Bearing	1
18	WFG-1015-12	Back Cylinder Head	1
19	GB/T308-2002 ϕ 2.5	Steel Ball	2
20	WFG-1210-12	Rotor	1
21	WFG-1210-11	Blade	4

22	WFG-1210-13	Cylinder	1
23	WFG-1210-14	Washer	1
24	WFG-1015-02	Front Cylinder Head	1
25	GB/T119.1-2000 1.5*5	Pin	1
26	GB/T276-1994 608-2Z	Bearing	2
27	WFG-1015-03	Driving Bevel Gear	1
28	WFG-1015-04	Locking Ring	1
29	WFG-2220-03	Hexagon Nut	1
30	WFG-1015-06	L Connector	1
31	WFG-1015-07	Oil Inlet	1
32	Bearing R4-2Z	Bearing	1
33	WFG-1015-08	Transmission Helical Gear	1
34	WFG-1015-09	Retainer	1
35	WFG-1015-10	Driving Shaft	1
36	WFG-1015-11	Woodruff Key	1
37	BQ04-01-01	1/4" Collet	1
38	WFG-1210-19	Collet Nut	1
39	WFG-1210-20	Big Spanner	1
40	WFG-1210-21	Small Spanner	1
41	BQ04-01-03	1/8" Collet	1
42	JB/T 6659-1993 14*2	O-Ring	1